

INSTRUMENT

Regulator RE



RE01 Series



Specification

Pressure Ratings

Per criteria of ANSI/ASME B31.3

Max. Inlet Pressure	3500 or 500 psig (241 or 34.5 bar)
Outlet Pressure Range	25, 50, 100, 250 and 500 psig (1.7, 3.5, 6.9, 17.3 and 34.5 bar)
Design Proof Pressure	150% of maximum rated

Operating Temperature

PCTFE Seat	-40 ~ 60°C (-40°F ~140°F)
Vespel® Seat	-40 ~ 177°C (-40°F ~350°F)

Flow Capacity

3500 psig / 241 bar	0.06 Cv
500 psig / 41.4 bar	0.2 Cv

Helium Leak Test

Inboard Leak Rate	2x10 ⁻⁸ atm cc/sec
-------------------	-------------------------------

Media Contact Materials

Body	316L Stainless Steel
Diaphragm	316L Stainless Steel or Hastelloy®
Seat	PCTFE (Optional Vespel®)
Spring	316 Stainless Steel or Inconel®
Poppet, Retainer	316L Stainless Steel

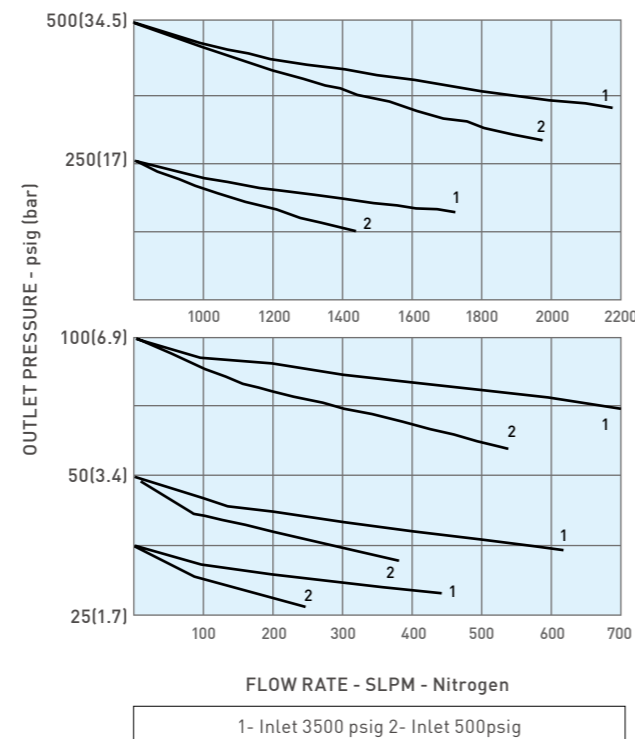
Cleaning

UNILOK Regulators are free from machine oils, loose particles and grease throughout the close cleaning process.

Features

- The RE01 series provides excellent stability of set pressure with accuracy, sensitivity.
- Metal to metal diaphragm seals provide enhanced leak integrity
- Optimum performance and cleanliness at a great value
- Low internal volume
- Adjustable stop to limit outlet pressure

Flow Chart



How To order

RE01 S F - 04N 12 0 -
 Regulator Type Body Material Connection Type Connection Size Inlet/Outlet Pressure Gauge Port Option Trim Material

Regulator Type	
RE01	RE01 Series

Connection Size	
04	1/4"

Gauge Port Option	
0	None (Fig. A)
1	1/4" Female NPT (Fig. B)
2	1/4" Female NPT (Fig. C)
3	1/4" Female NPT (Fig. D)

Body Material	
S	316L SS
B	BRASS

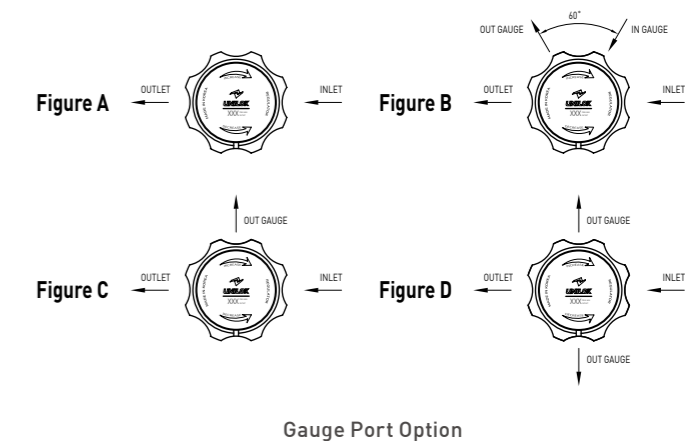
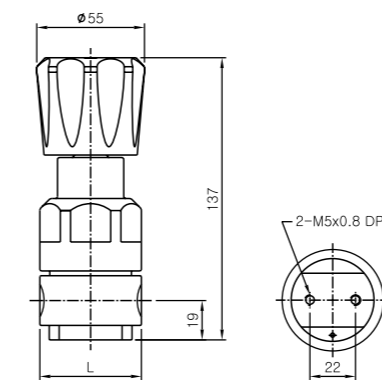
Maximum Inlet Pressure	
1	3500 psig / 241bar
2	500 psig / 34.5 bar

Trim Material	
None	316L SS
H	Hastelloy®

Connection Type	
F-*N	Female NPT
U-*T	UNILOK Tube Fitting

Outlet Pressure Range	
0	1 ~ 25 psig / 1 ~ 1.7 bar
1	1 ~ 50 psig / 1 ~ 3.5 bar
2	1 ~ 100 psig / 1 ~ 6.9 bar
3	1 ~ 250 psig / 1 ~ 17.3 bar
4	1 ~ 500 psig / 1 ~ 34.5 bar

Ordering Information & Dimensions



Part No.	End Connection	Dimensions(mm)	
		Inlet	Outlet
RE01*	F-04N	1/4" Female NPT	L ± 1
	U-04T	1/4" UNILOK Tube Fitting	109.7

Dimensions are for reference only and are subject to change without prior notice.

RE02 Series

Specification

Pressure Ratings

Per criteria of ANSI/ASME B31.3

Max. Inlet Pressure	3500 or 500 psig (241 or 34.5 bar)
Outlet Pressure Range	25, 50, 100, 250 and 500 psig (1.7, 3.5, 6.9, 17.3 and 34.5 bar)
Design Proof Pressure	150% of maximum rated

Operating Temperature

PCTFE Seat	-40 ~ 60°C (-40°F ~140°F)
Vespel® Seat	-40 ~ 177°C (-40°F ~350°F)

Flow Capacity

Flow Capacity	0.5 Cv
---------------	--------

Helium Leak Test

Inboard Leak Rate	2x10 ⁻⁸ atm cc/sec
-------------------	-------------------------------

Media Contact Materials

Body	316L Stainless Steel
Diaphragm	316L Stainless Steel or Hastelloy®
Seat	PCTFE (Optional Vespel®)
Spring	316 Stainless Steel or Inconel®
Poppet, Retainer	316L Stainless Steel

Cleaning

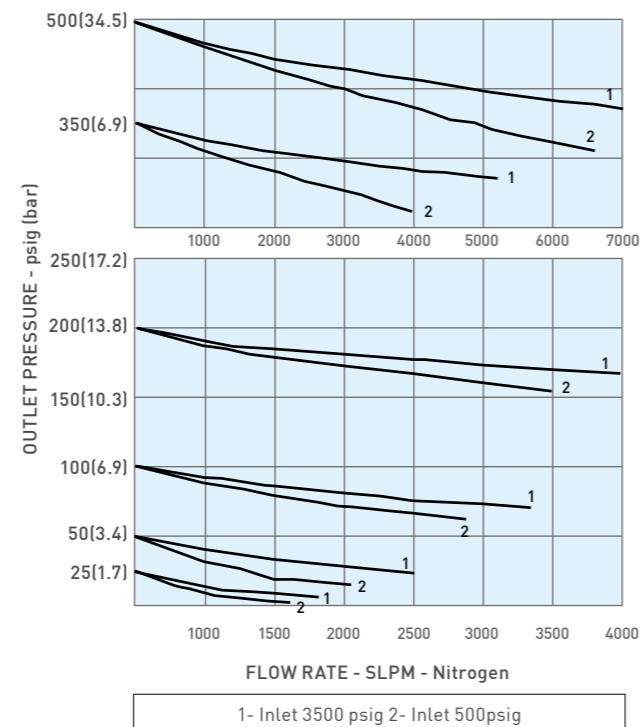
UNILOK Regulators are free from machine oils, loose particles and grease throughout the close cleaning process.



Features

- The RE02 series provides excellent stability of set pressure with accuracy, sensitivity.
- Metal to metal diaphragm seals provide enhanced leak integrity
- Optimum performance and cleanliness at a great value
- Low internal volume
- Adjustable stop to limit outlet pressure

Flow Chart



How To order

RE02 S F - 08N 12 0 -
 Regulator Type Body Material Connection Type Connection Size Inlet/Outlet Pressure Gauge Port Option Trim Material

Regulator Type	
RE02	RE02 Series

Connection Size	
06	3/8"
08	1/2"

Gauge Port Option	
0	None (Fig. A)
1	1/4 " Female NPT (Fig. B)
2	1/4 " Female NPT (Fig. C)
3	1/4 " Female NPT (Fig. D)

Body Material	
S	316L SS
B	BRASS

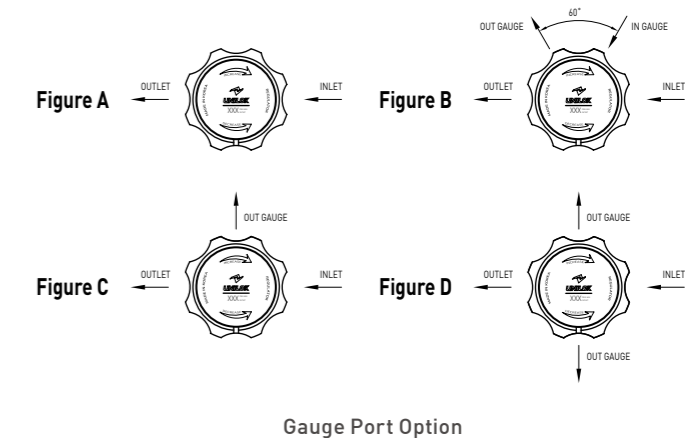
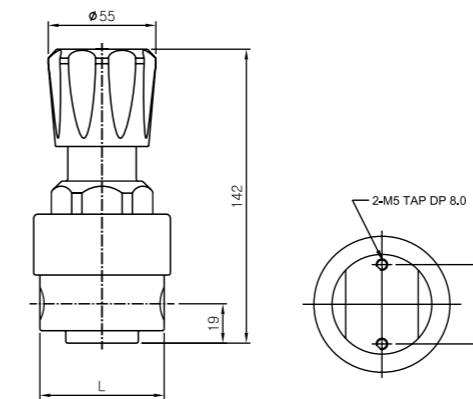
Maximum Inlet Pressure	
1	3500 psig / 241bar
2	500 psig / 34.5 bar

Trim Material	
None	316L SS
H	Hastelloy®

Connection Type	
F-*N	Female NPT
U-*T	UNILOK Tube Fitting

Outlet Pressure Range	
0	1 ~ 25 psig / 1 ~ 1.7 bar
1	1 ~ 50 psig / 1 ~ 3.5 bar
2	1 ~ 100 psig / 1 ~ 6.9 bar
3	1 ~ 250 psig / 1 ~ 17.3 bar
4	1 ~ 500 psig / 1 ~ 34.5 bar

Ordering Information & Dimensions



Part No.	End Connection		Dimensions(mm)
	Inlet	Outlet	L ± 1
RE02*	F-08N	1/2" Female NPT	60.0
	U-06T	3/8" UNILOK Tube Fitting	136.7
	U-08T	1/2" UNILOK Tube Fitting	136.7

Dimensions are for reference only and are subject to change without prior notice.